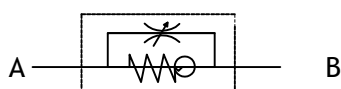




THROTTLE CHECK VALVES

Symbol



Construction

TCV=slot type flow control valve with shut off function built-in check valve

Mounting : Inline mounting

Adjustment : Manully using control knob

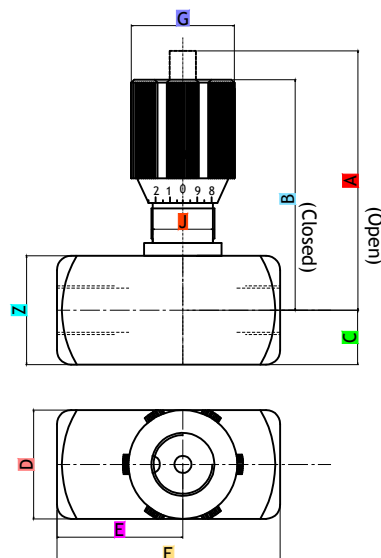
Material a) Valve body-steel,yellow zinc plated
b) control spindle-steel
c) control knob(aluminum)

HYDRAULIC SPECIFICATIONS

NOMINAL PRESSURE : Pn=350 bar
 Operating fluid : Mineral oil
 Fluid temperature range : -20°c to +80°c
 Direction of flow : From A to B controlled flow
 : From B to A free flow
 Cracking pressure : Po = 0.5 bar
 Flow rate : TCV 08... Q = 50 l/min
 : TCV 10... Q = 60 l/min
 : TCV 12... Q = 90 l/min
 : TCV 20... Q = 300 l/min

NOTE :

All detail in this data sheet are subjected to technical modifications.



SALIENT FEATURES

- Simple and Accurate Control of hydraulic Fluids
- Slot Type Flow Control Valve with shut of function
- Valves Available with and wihtout Built-in Check Valve
- Operating Temperature Range :-20° C to 80° C
- Maximum Safety due to patented spindle Locking
- Range - 1/4" BSP to 1" BSP

TECHNICAL SPECIFICATION

MODEL CODE TCV 08 P 01
 Designation _____
 TCV=Throttle check valve
 SIZE 08,10,12,20
 Seal material _____
 v = viton(Fpm)
 P = Perbunan
 Design code _____

Dimension :

SIZE	THREADED CONNECTION	A	B	C	D	E	F	Z	G	J
08	G1/4"	77	71	13	29	35	61	29	Ø28.5	16.5
10	G3/8"	94.5	86.5	15	38	41	65	38	36	21
12	G1/2"	92.5	84	17	38	44	78	38	36	40
20	G1"	141	127.5	25	50	77	127	50	50	30