

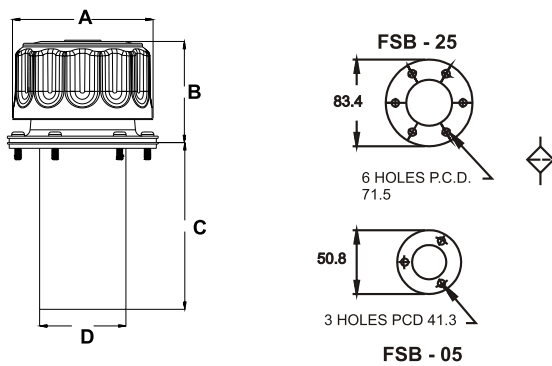
BREATHER - FSB / TB



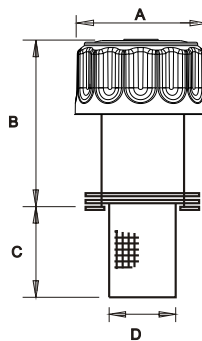
- CHROME PLATED STEEL CAP - VENTS UNDERNEATH
- ALTERNATE CAP FINISH BLACK POWDER COATED
- FILTRATION 40 MICRONS STANDARD / OPTIONAL 10 & 3 MICRONS
- AIR FLOWS TO 25 CFM (750 LPM)
- RUGGED CAST ALUMINIUM HOUSING (FOR BM MODEL)
- METAL STRAINER - STANDARD
- HARDWARE INCLUDES GASKETS & (10-32) SCREWS



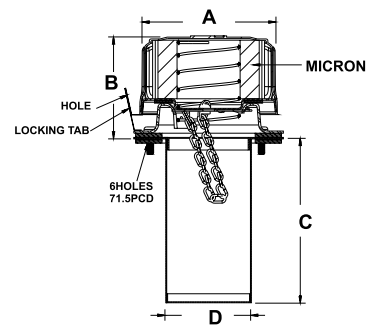
FLANGE TYPE



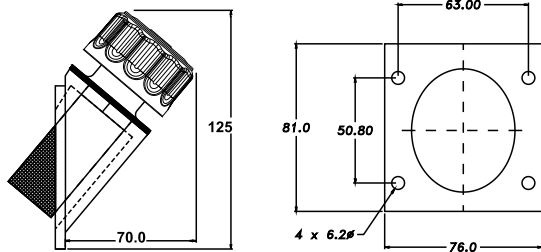
FLANGE TYPE HIGH NECK



OPTIONAL FEATURES

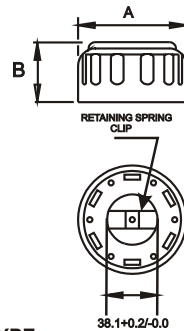


FSB-25 HN

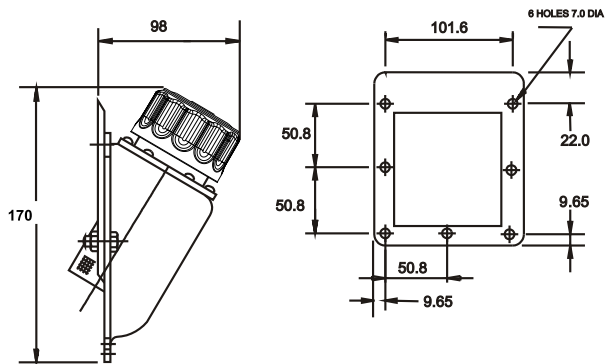


FSB-05 BM

PUSH ON TYPE PB-25

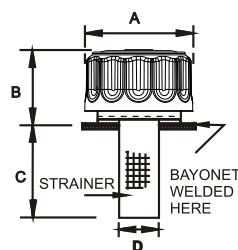


SIDE MOUNT



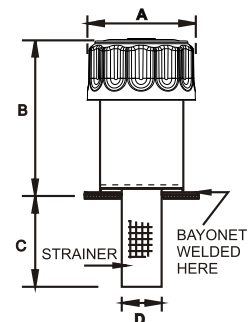
FSB-25 BM

WELD TYPE



FSBW-25

WELD TYPE HIGH NECK



FSBW-25 HN

OPTIONAL / SPECIAL FEATURE (CONSULT FACTORY) - OMIT IF NOT REQUIRED

BREATHER - FSB / TB



MODEL	DISPLACEMENT		RATING	A	B	C *	D	WT
			MICRONS					KGS
FSB - 05	150	LPM	40	46	52	65	28	0.10
FSB - 05 - 10	90	LPM	10	46	52	65	28	0.10
FSB - 25	720	LPM	40	77	52	91	48	0.25
FSB - 25 - 10	400	LPM	10	77	52	91	48	0.25
FSBW - 25	720	LPM	40	77	52	87	30	0.25
FSB - 25-HN 1	720	LPM	40	77	73	91	48	0.35
FSB - 25-HN 3	720	LPM	40	77	110	91	48	0.40
FSBW - 25-HN 1	720	LPM	40	77	73	81	30	0.35
FSBW - 25-HN 3	720	LPM	40	77	110	55	30	0.40
PB - 25	720	LPM	40	77	50	-	-	0.21

MODEL CODE : ASSEMBLY

FSB *	- 25	- * *	- BM	- **	- **	- ***	- *
SERIES	CAPACITY	FILTRATION	FEATURE	STRAINER	FEATURE 1	FEATURE 2	FEATURE 3
	CFM	μ MICRONS	OPTIONAL (1)	C * OPTIONAL(2)	OPTIONAL # (OMIT IF NOT REQD)	OPTIONAL # (OMIT IF NOT REQD)	OPTIONAL # (OMIT IF NOT REQD)
FSB	05 (150 LPM)	40 - 40 μ Std	BM - SIDE MOUNT	STD		CONSULT FACTORY	B - BLACK POWDER COATED CAP
FSB	25 (750 LPM)	10 - 10 μ Nom	BM - SIDE MOUNT	L 4 - STD	L T - LOCKING TAB	DS 4 - DIP STICK 4"	
FSBW			03 - 3 μ Nom	HN 1 - HIGH NECK 1.5"	L 6 - 152 m m	P5 - Pressurised 5psi	
			HN 3 - HIGH NECK 3"	L 8 - 203 m m	SG - SPLASH GUARD	DS 8 - DIP STICK 8"	

OPTIONAL / SPECIAL FEATURE (CONSULT FACTORY) - OMIT IF NOT REQUIRED