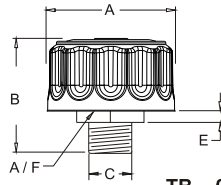
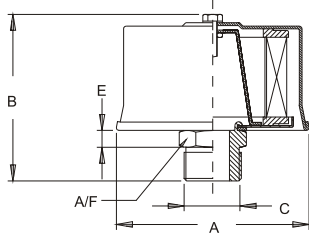


# BREATHER - TB



## THREADED TYPE



TB - 35  
TB - 65  
TB - 165

TB - 05  
TB - 25

MODEL	DISPLACEMENT	RATING	MICRON	C		E	A / F	WT	
				A	B				STD
TB . 05 .	150 LPM	40		45	66	1/4"	8	25	0.13
TB . 05 . 10	90 LPM	10							
TB . 25 .	720 LPM	40		77	66	3/4"	10	30	0.25
TB . 25 . 10	400 LPM	10							
TB . 35 .	1000 LPM	10		110	138	1 - 1/2"	12	55	0.40
TB . 65 .	2000 LPM	10		145	145	2"	15	65	0.55
TB . 165 .	4000 LPM	10		185	195	2 - 1/2"	15	80	1.30

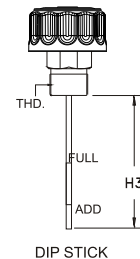
Note : TB 35 / 65 / 165 Nylon Housing

### MODEL CODE : ASSEMBLY

TB	- 05	- 10	- * * *	- P	- *	
SERIES	CAPACITY	FILTRATION	THREADS	FEATURE	FEATURE 3	
	CFM	μ MICRONS	OPTIONAL #	SPECIAL #	OPTIONAL # (OMIT IF NOT REQD)	
TB	05	40 - 40 μ Std	02* - 1/4" * B / N	P - PRESSURISED (5 P S I)	B - BLACK POWDER COATED CAP	
			04S - 7/16" - 20 UNF			
			03* - 3/8" * B / N			
			06S - 9/16" - 18 UNF			
			04* - 1/2" * B / N			
			08S - 3/4" - 16 UNF			
	25	10 - 10 μ Nom	03 - 3 μ Nom	04* - 1/2" * B / N		SG - SPLASH GUARD
				08S - 3/4" - 16 UNF		
				06* - 3/4" * B / N		
				12S - 1-1/16" - 12 UNF		
				08* - 1" * B / N		
				16S - 1-5/16" - 12 UNF		
35	10 - 10 μ Nom	10 - 10 μ Nom	10* - 1 - 1/4" * B / N	DS 4 - DIP STICK 4"		
			20S - 1-5/8" - 12 UNF			
			12* - 1 - 1/2" * B / N			
			24S - 1-7/8" - 12 UNF			
65	10 - 10 μ Nom	10 - 10 μ Nom	16* - 2" * B / N	DS 6 - DIP STICK 6" (Ref - H3)		
			32S - 3" - 12 UNF			
165	10 - 10 μ Nom	10 - 10 μ Nom	20* - 2-1/2" * B / N	DS 8 - DIP STICK 8"		
			40S - 3-1/2" - 12 UNF			

### P - FEATURE

- BUILT IN VALVE ASSEMBLY HELPS TO MAINTAIN PRESET PRESSURE (5 P S I) IN THE TANK.
- ALLOWS FREE FLOW OF AIR INTO THE TANK IF PRESSURE FALLS BELOW ATMOSPHERIC.
- IF PRESSURE INSIDE TANK INCREASES VALVE RELEASES AT PRESET PRESSURE (5 P S I)
- DISPLACED AIR IS FILTERED & CLEAN



# OPTIONAL / SPECIAL FEATURE (CONSULT FACTORY) - OMIT IF NOT REQUIRED